

Specifications

Instrument Performance

Principle: Photoelectric Colorimetry
Assay Method: End Point, Kinetic, Two Point etc.
Throughput: Constant 200 T/H
STAT Function: Specific Emergency Positions

Reaction System

Reaction Cuvette: 60 Reusable Reaction Cuvette
Washing System: 8-Step Warm Water Washing
Minimum Reaction Volume: 180 µL
Heating System: 37 ± 0.1 °C

Sample System

Sample Disk: 40 Samples Positions Include Standard, QC, STAT Positions
Sample Probe: High-Polished Probe, Automatical Liquid Level Detection and Tracing, Collision Protection, 2-50 µL with 0.1 µL Increment

Optical System

Light Source: Halogen-Tungsten Lamp with Long Life, 12V, 20W
Photometry Range: 0 - 4.0 Abs
Wavelength: 9 Wavelengths (300 nm - 700 nm)

Reagent System

Reagent Disk: 40 Reagent Positions, Supporting Different Type of Bottles
Cooling System: 2 - 8 °C, 24 Hours Non-Stop Cooling System
Reagent Probe: High-Polished Probe, Automatical Liquid Level Detection and Tracing, Collision Protection

Dimension and Weight

Dimension: 860 mm x 590 mm x 570 mm
Gross Weight: 50 KG, Net Weight: 33 KG
Wavelength: 9 Wavelengths (300 nm - 700 nm)

Power & Operating Requirement

Power Supply: 110/230 VAC, 50-60 Hz
Temperature: 10 °C - 35 °C
Humidity: 40 - 80 %, Free From Water Dew formation



 Serachem®
evolution²⁰⁰

Automated Clinical Chemistry Analyzer

Let our experience....
be your guide....



WWW.SERACHEM.ASIA



EC REP

Serachem Diagnostic Limited
71-75, Shelton Street, Convent
Garden, LONDON, WC2H9JQ,
ENGLAND
E-mail: serachem@serachem-diagnostic.com
www.serachem-diagnostic.com

Serachem Diagnostic, LLC
354 E, Main Street Suite, 1011 Middletown
D.E. 19709, USA, PH: +1 (302) 601-7242

Manufactured By

Serachem Diagnostic India Private Limited
82, Ward No. 10, Vashisth Colony, Near OHM
Convent School, Kurukshetra, Haryana-136118
E-mail: info@serachem.asia, PH : +91-9416831111
www.serachem.asia
Manufacturing Licence No.: MFG/IVD/2023/000121



CONTACT US
+91 94 1683 1111
+91 94 6670 6670



E-MAIL US
INFO@SERACHEM.ASIA
SALES@SERACHEM.ASIA



VISIT US
WWW.SERACHEM.ASIA

evolution²⁰⁰

Automated Clinical Chemistry Analyzer

An Ideal Solution for Small and Mid Size Laboratories and as a Backup for High Workload Laboratories

Product Features

Compact Size

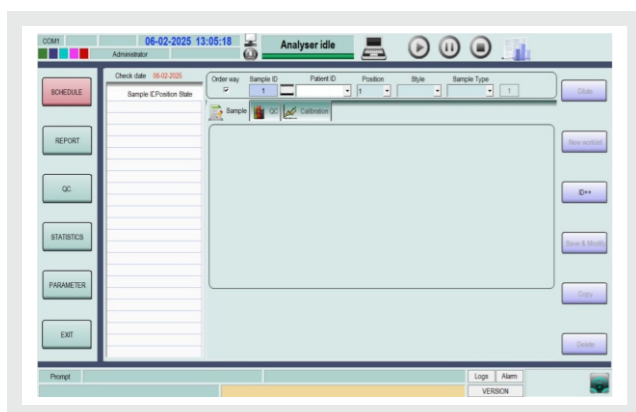
Carry-On Baggage Size.
Light, Easy to Carry.

Excellent Results

End Point CV $\leq 0.5\%$.
Kinetic/Two-Point CV $\leq 1\%$.
Turbimetric Method CV $\leq 2\%$

Cost Effective

Affordable Price for Analyzer.
Economical Spare Parts.

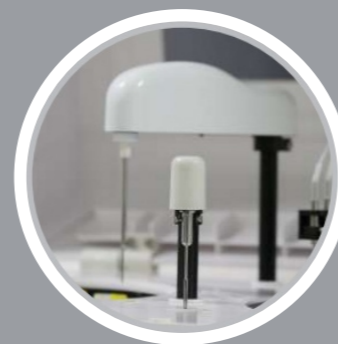


All -In -One Design

Barcode for Samples and Reagents.
Water Cycling Cooling.
Warm Water Washing.
Turbimetric Test for Immunology Items.
Liquid Detection and Collision Protection.

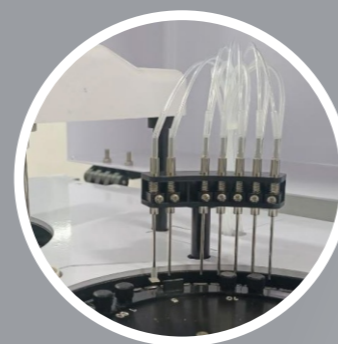
User Friendly Software

Easy to Operate, Customized Setting.
Compatible with Different Window and LIS.
Stable Circuitry System and Liquid Path.
Intuitive Software of reflex and Dedicated System Packs



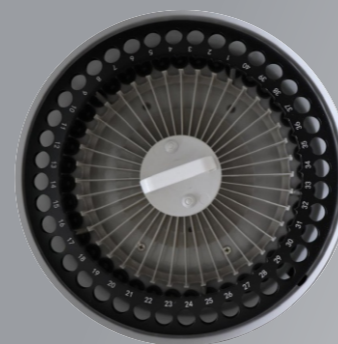
Sample/Reagent Multifunction Probe Stirrer

Electro-Polished Probes Which Prevents Cross Contamination and Single Teflon Coated Stirrer.
Internal And External Prob Washing and Probe Carry Over $<3\%$.
Capacitive Level Detection.
Vertical and Horizontal Obstruction Detection Facility to Prevent Probe Crash.
Long Life Pipetting System with Plunger Driven by Precised Stepper Motor.
Cutting Edge Technology for Volume Measurement by Ceramic Block Piston.



8-Step On-Board Laundry System

Hot Water Wash of Cuvettes , Carry Over $<1\%$.
Continuous Cuvette Blank Checking, If Blank exceeds the Limit , Cuvette is Skipped.
Water Consumption 5-6 Liters Per Hour.
Option of Three Different Wash for Forbidden Pairs to Minimize the Carry Over.



Reagent and Sample Tray

40 Refrigerated Reagent Positions and 40 Samples Positions Concentrically Arranged.
Reagent and Sample Positions are Barcode Enabled.
Detachable Reagent Tray.
Peltier Based Cooling System to Maintain Temperature Between $8\text{ }^{\circ}\text{C}$ to $12\text{ }^{\circ}\text{C}$.
Primary Tubes and Samples Cups can be used with Continuous Loading Facility.
STAT Samples / Controls / Calibrators can be Placed at any Position.



Reaction and Optical System

60 Discrete, Dismountable, Easily Replaceable and Reusable Cuvettes with 6 mm Optical Path.
High Transmittance Cuvette Material.
Halogen Tungsten Lamp with Fibre Optics.